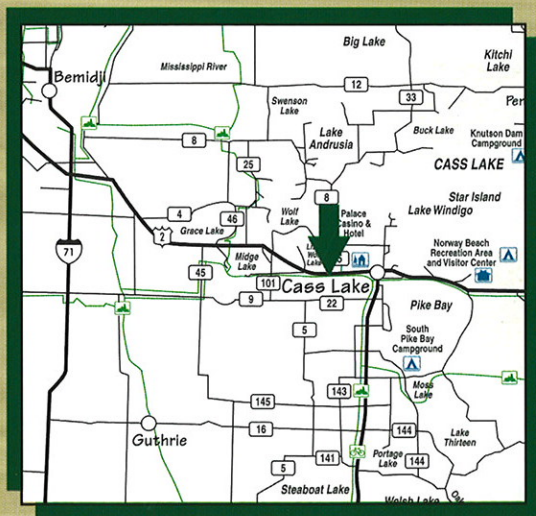




Though the foresters used many differently designed tools, they had many that were designed for specific use. In the old days of harvesting the forest, men designed and handmade some of the tools they needed. Need demanded ingenuity and invention. Here you can also see the prelude to the snowmobile. In viewing the artifacts you will always remember your stop at Cass Lake, MN.

ALL ROADS LEAD TO CASS LAKE



CASS LAKE, MINNESOTA
HWY 2 & GRANT UTLEY

while in Cass Lake visit...

- LYLE'S REPLICA LOGGING CAMP
"as it was" with audio narrative
by Ed Hill
- OLD SOO LINE TRAIN DEPOT
that houses:
 - Gift Shop
 - Wild Life Scenes
 - Historical Artifacts
- Abundance of RESORTS and
RV CAMPS on Popular Lakes
Eagles
- STAR ISLAND - only lake within a
lake in Northern Hemisphere
Camping
- FORESTRY HEADQUARTERS LOG
BUILDING
Trees/ 150 Years old
- ITASCA STATE PARK nearby
Canoeing
- CHIPPEWA NATIONAL FOREST
Trails - ATV - Walking
- GOLF COURSES
Casinos
- TENNIS
Lyles Logging Camp

FEATURING THIS YEAR!

GHOST TOWNS OF NORTHERN MINNESOTA
HOW THEY CAME TO BE
AND WHERE TO FIND THEM.

Cass Lake Museum • P.O. Box 548 • Cass Lake, MN
56633 • (218) 335-6723 • 1-800-356-8615 •
www.casslake.com

Welcome to LYLE'S LOGGING CAMP/MUSEUM

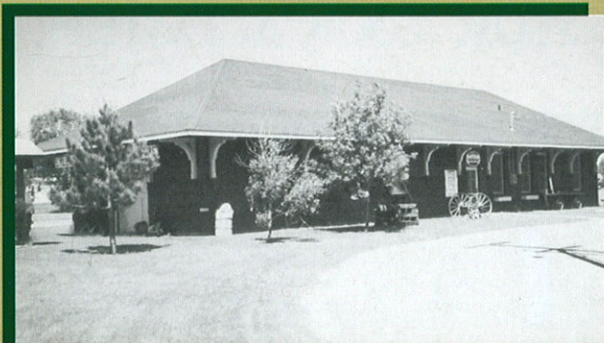
"AS IT WAS"

Best campsite around today



SOO LINE

At the Soo Line Depot



STOP, LOOK & LISTEN

NARRATIVES IN EACH BUILDING

OPEN

Memorial Weekend thru Labor Day
9:00 - 5:00 Monday thru Saturday
Closed on Sundays

CURATORS OF HISTORY AND ARTIFACTS



F.T. Gustafson



Lyle Chisholm



Edward Hill

STOP, LOOK & LISTEN

NARRATIVES IN EACH BUILDING



Visit the Logging Camp at Cass Lake, Minnesota and relive the period when white pine was king in the business of lumbering in the Land of Legends.



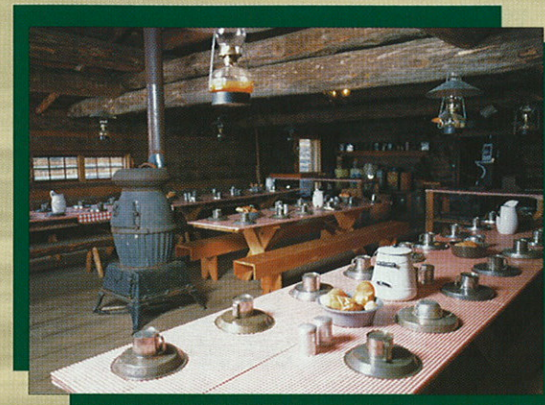
Replica of Wanigan, Bunkhouse, Cookhouse, Blacksmith Shop, Horsebarn and Files shop.

Logging camps varied in size from accommodating just a few men to up to 200 or more men. For a number of years following the founding of Cass Lake there were many men in camps of this type during the winter months in the surrounding area.



ACTION

That's what you see in our museum. The unique displays of the animals found in the Chippewa National Forest of yesterday and yet today. The animals tell their own story in their natural habitats.



Logging camps were noted for serving abundant, tasty and nutritious meals. Other than a symphony by a crew of men eating off tin plates and drinking from tin cups and the rumbling of water boiling in the barrel attached to the range, it was surprisingly quiet at mealtime in a logging camp cookhouse.

The Blacksmith was a very important man in a logging camp. Keeping tools and equipment in repair often required him to be busy in the shop after hours and it was not uncommon to find him working on Sundays especially when major breakdowns occurred.

Cass Lake has an abundance of good resorts on popular lakes. RV camps - the area has 400 sites for campers - plenty of restaurants - motels. See Star Island - only lake within a lake in Northern Hemisphere. Historical - Forestry headquarters log building.