

## HOURS:

12 PM TO 5 PM EVERYDAY  
LATE MAY THRU MID-SEPTEMBER  
ALSO BY APPOINTMENT

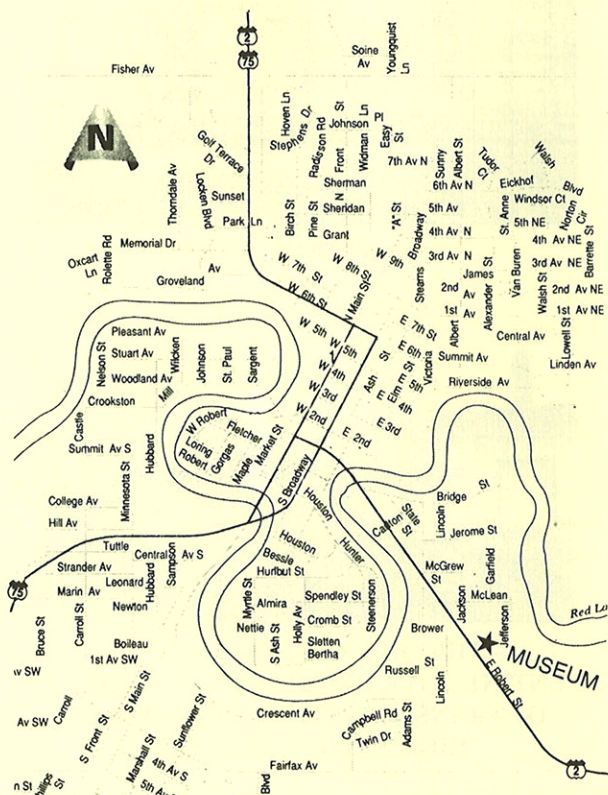
## ADMISSION:

FREE-WILL DONATIONS

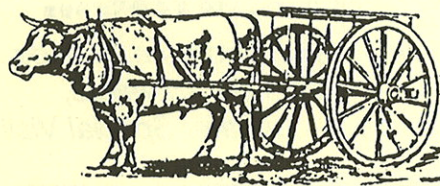
## LOCATION:

HIGHWAY 2 EAST  
CROOKSTON, MN

*We are happy to have you  
stop in to see us!*



BRANDNER PRINTING



# POLK COUNTY HISTORICAL MUSEUM



***THIS MUSEUM STANDS  
SO THAT THE FUTURE MAY LEARN  
FROM THE PAST***

POLK COUNTY HISTORICAL SOCIETY  
P.O. BOX 214  
CROOKSTON, MN 56716-0214  
218-281-1038



# Welcome...

*to our Neighbors from Canada,  
Out-of-State Travelers,  
as well as all our other Special Visitors.*



**HISTORIC CHAPEL**

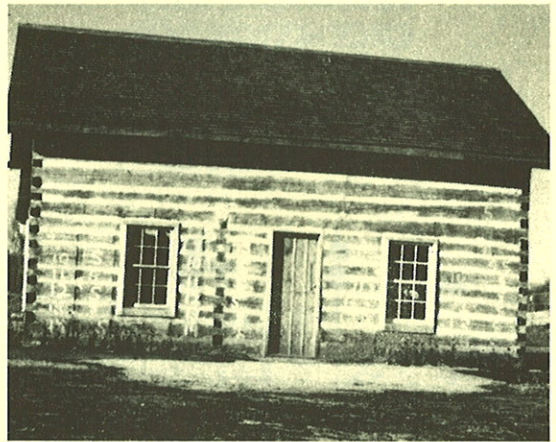


**GRAND PIANO**

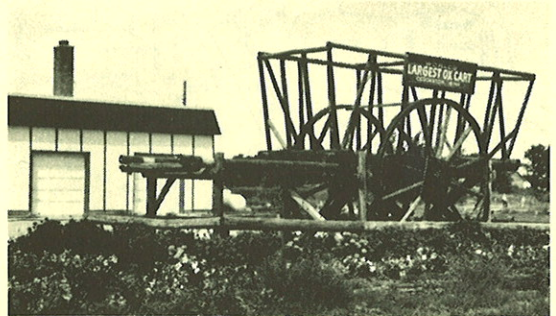
**MODEL TRAIN  
AND MANY  
OTHER ARTIFACTS**

## **OUTSIDE BUILDINGS:**

- 1910 Summer Kitchen
- BN Railroad Caboose
- 1890 School House
- 1891 Frame House
- Blacksmith Shop
- Church Bell & Steeple
- 3 Large Buildings with Tractors  
Airplanes, Cars, Machinery, Buggies,  
and Fire Engines



**1868 LOG HOUSE**



**THE OX CART STANDS AS A  
SENTINEL OVER THE MODERN VEHICLES  
OF TRANSPORTATION THAT PASS ON  
HIGHWAY #2 EVERY DAY.**