

## OTHER AREAS OF LOCAL INTEREST

*Moose Lake Provincial Park and Campground, with Silver Birch Resort. Campsites are also available at Birch Point on Lake of the Woods.*

*Buffalo Point Resort, golf course, marina and campgrounds.*

*Our Museum is open every Saturday and Sunday from 1 pm until 5 pm, from mid-June until early September. Arrangements may be made for tours at other times. Please call 437-2342, 437-2209 or 437-2080 for more information.*

*Admission is charged.*

*We are wheelchair accessible and air conditioned*

*We are located in Sprague, Manitoba, which is on Highway 308, ½ mile north of the junction with Highway 12, in the southeastern corner of Manitoba. Our Museum is in town at the corner of Simenson Street and May Avenue.*

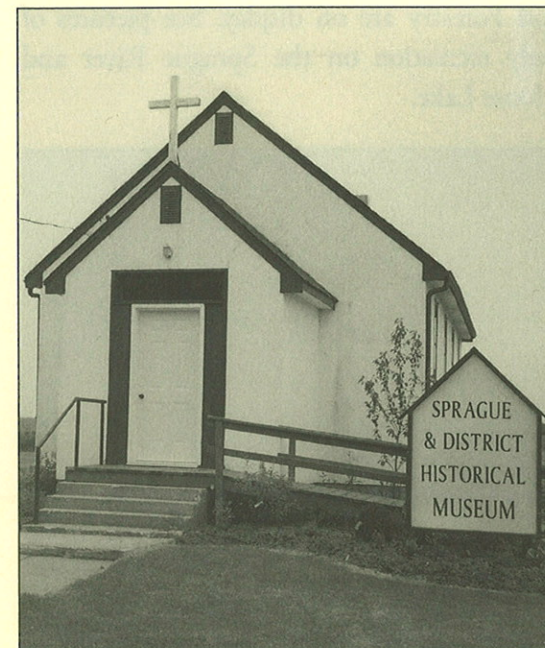
Displays featuring our early logging days and businesses show tools of the trade and how ingenious the old tools are. Take a look at one of the first power saws and appreciate today's equipment.

The logging sleigh on the grounds is an original, used for many years in the local forestry industry.



Our Museum includes histories of all the schools which formed Ross L. Gray School in Sprague. It features early school registers - come and find your name - or sit at the teacher's desk and reminisce in our old-fashioned schoolroom.

## SPRAGUE & DISTRICT HISTORICAL MUSEUM

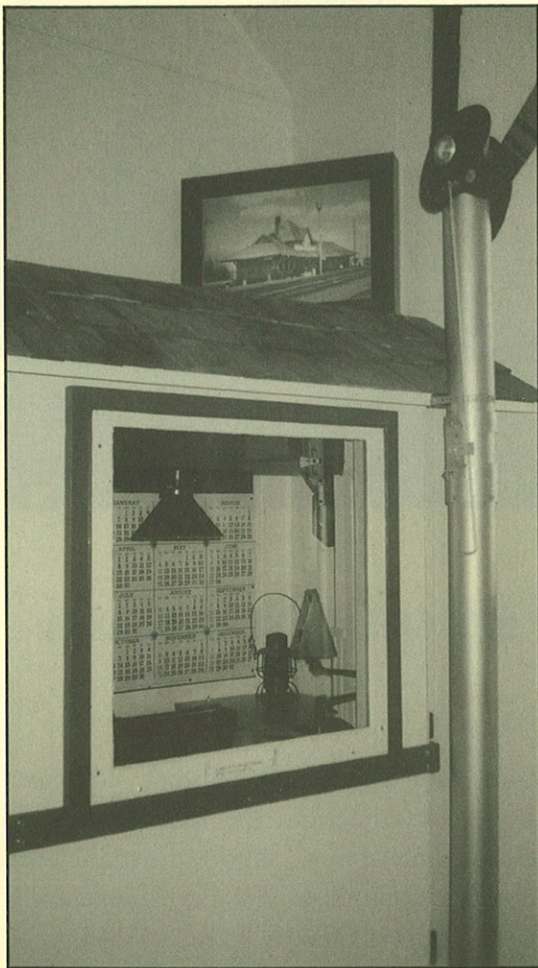


## SPRAGUE, MANITOBA

Come and explore local history – pioneer maps, home interiors and tools from early industry in our area. Also featured are area schools and churches, and view an operating CNR telegraph office from the 40's! Visit the Barber Shop, Country Store and Post Office.

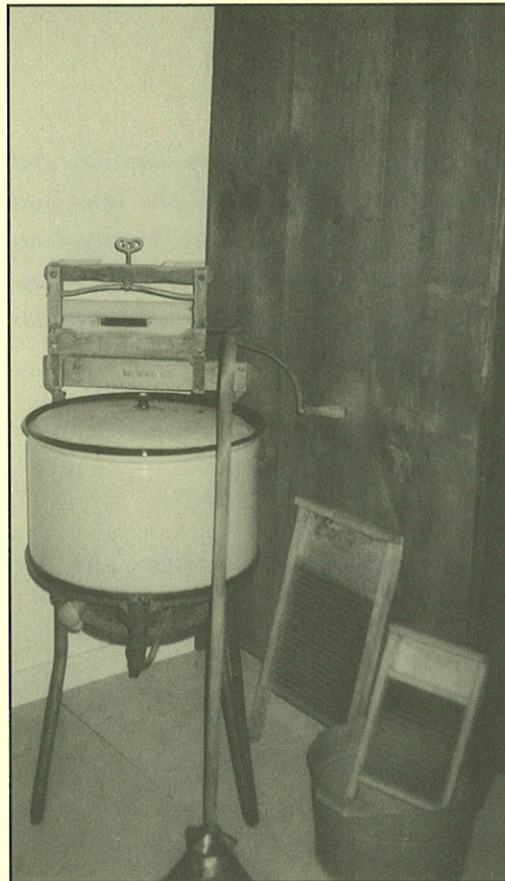


Featured is a mockup of a CNR telegraph office from the 1940's, as well as original section lights and signage from the CNR station. Artifacts from the Sprague Hotel and other local businesses, as well as Customs, RCMP, and Forestry are on display. See pictures of early recreation on the Sprague River and Moose Lake.



The chapel features artifacts from several local churches. You can follow the stories of all of them while enjoying the reading corner of the chapel.

Appreciate the comforts of our pioneer kitchen and bedroom displays. Visualize using the washing machine of the time – no fitness classes necessary after this workout!



## DID YOU KNOW?

The Museum building was built in the 1950's, and was originally the Lutheran Church. It was later sold to the Catholic Church, who used it for many years. In 2004, they sold it to the Museum.

The Museum is a non-profit organization operated by a Board of Directors elected at the annual meeting and run by volunteers.

Be sure to include a visit to the "wee House at the Back" on your tour.

You are invited to bring your friends and visitors to browse. We appreciate your name and comments in the guest book.

We are continually expanding our collections and welcome your input and donations related to our displays. We may be contacted at Box 123, Sprague, MB R0A 1Z0, or by telephone 437-2342 or 437-2209.