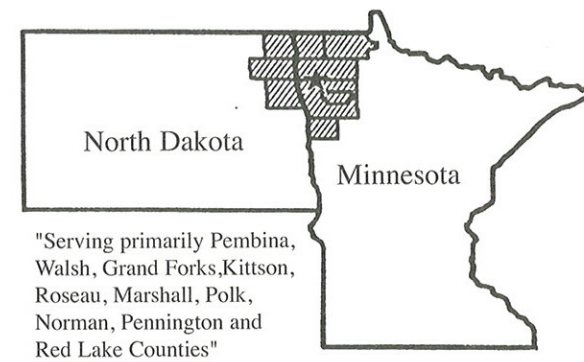
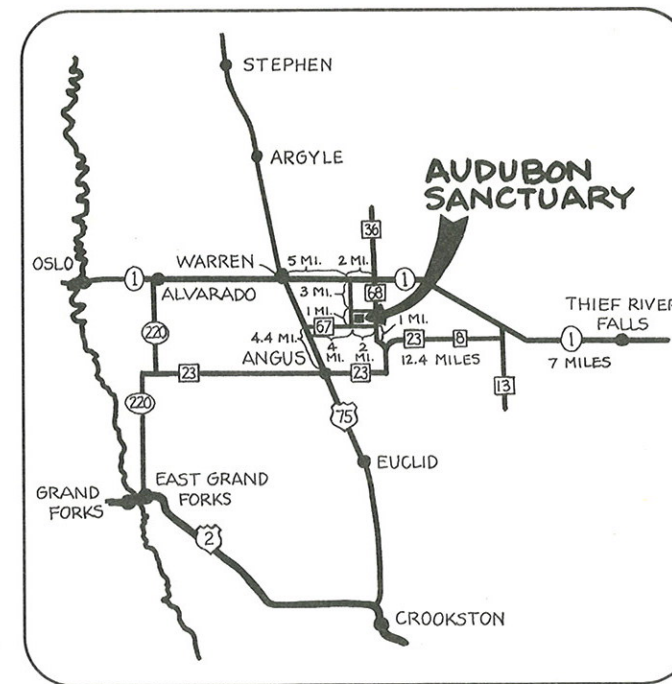
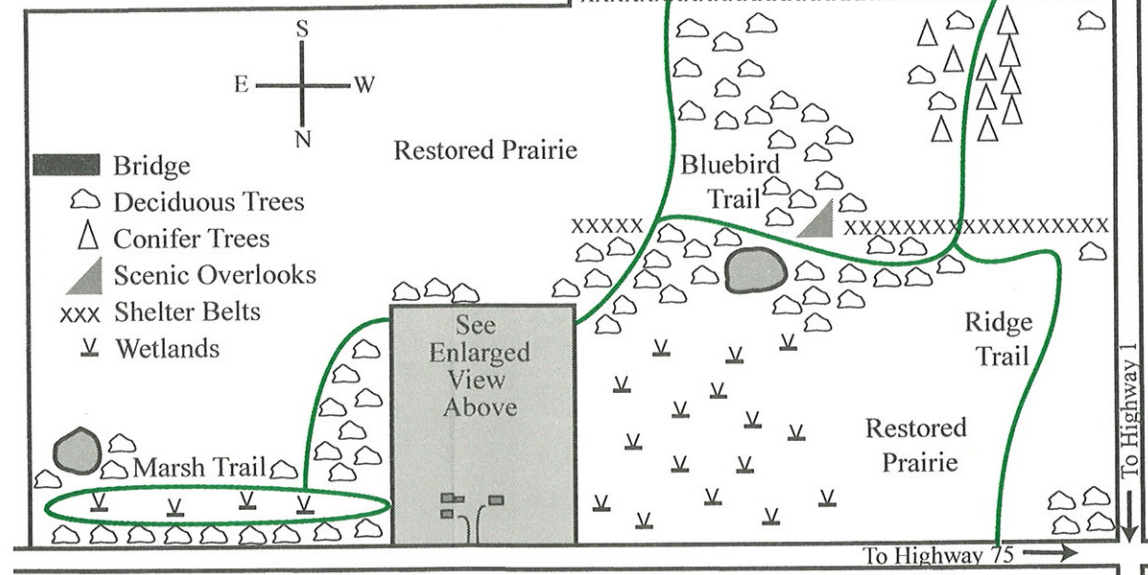


RULES AND REGULATIONS

- Open to the public
- Picnicking, camping, hiking, canoeing, wildlife viewing, cross country skiing
- No firearms or weapons
- Motorized vehicles must remain in the parking area unless otherwise authorized
- Pets must be on a leash
- Pack out your own garbage
- No collecting or picking of materials or flowers



CONTACT

Wetlands, Pines and Prairie
Audubon Sanctuary

27453 190th St. NW
Warren, Minnesota 56762

Telephone: 218-745-5663

E-mail: wpp@wiktel.com

Web Site: <http://www.wiktel.net/wpp/>

Operated By Agassiz Audubon Society
A Chapter of National Audubon Society

Welcome To The Wetlands, Pines and Prairie Audubon Sanctuary



*"An Environmental Education Center
Located in
Northwestern Minnesota."*

Gifts to the Sanctuary are tax deductible!

Membership benefits include:

Newsletter

Gift Shop discounts

Limited edition mug

Satisfaction of contributing to environmental education on-site and off-site

For donations of \$50 or more, a Sanctuary

T-shirt

Membership Categories

Individual/Family \$20

Business/Organization \$20

Donor \$25

Sustaining \$50

Patron \$100

Extra Mugs \$6 each

Name _____
Address _____
City _____ State _____ Zip _____
Phone _____

Mug and/or Shirt Info

____ Please Mail ____ Will Pick Up

Shirt Size: _____

Total Enclosed

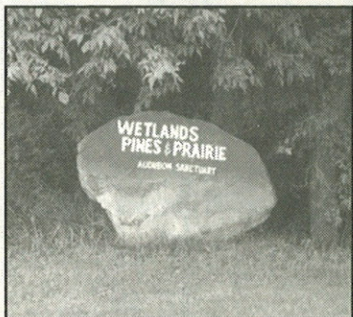
RETURN TO: Friends of the Sanctuary, 27453 190th St. NW Warren, MN 56762-9256

Memberships Are Essential

The Sanctuary is self-funding and depends on several sources for income. Memberships help fund the programming which includes publication of the newsletters. We encourage your membership to help promote the Sanctuary's goals and objectives.

Goals & Objectives

1. Provide on-site and regional environmental education to Audubon/Sanctuary members, schools, community groups and the public.
2. Manage the Sanctuary as a refuge for all species of wildlife.
3. Develop demonstration areas for land management practices.

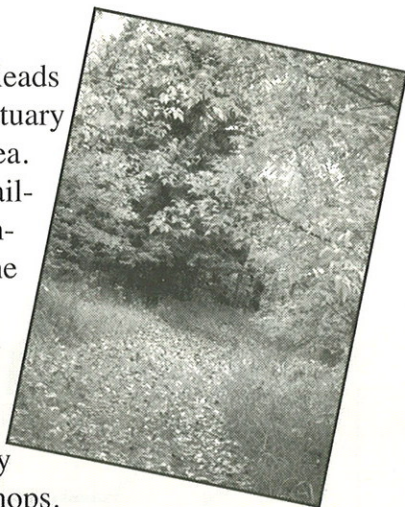


The History

In 1893 Eldor Omdahl's grandfather, John Hanson, emigrated from Norway. He homesteaded the 160 acres surrounding the Sanctuary headquarters. After passing through several owners, including the Federal Land Bank during poor economic times, Eldor purchased the farm in 1949. That same year he began planting trees on the farm in recognition of their conservation value. In 1959 he began digging ponds and waterways for the purpose of retaining water. Which was in sharp contrast to the current practice of draining wetlands. In 1981 Eldor and Stella gave 640 acres of land to the Agassiz Audubon Society as a gift to establish a Wildlife Sanctuary.

Environmental Education Programs

- A full-time Director leads programs at the Sanctuary and in our service area.
- On-site programs available for schools, community groups and the general public includes: animal programs, story telling, curriculum lessons, guided tours, monthly programs and workshops.
- Off-site activities in the region include: outings, guest speakers, dinner/potluck meetings, Christmas Bird Counts and more.
- To find out more about upcoming programs check our Snowy Owl and Pond Reflections Newsletters or contact the Sanctuary.



The Visitor Center

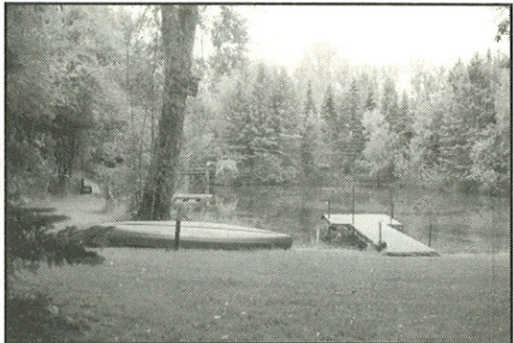
An old barn was remodeled into the Sanctuary Visitor Center. Inside you will find information, a gift shop, restrooms and the office.

The Magpie Nest Gift Shop has souvenir mugs, t-shirts, field guides, bird feeders, and bird seed for sale.



Oasis of Biodiversity

Operated by the Agassiz Audubon Society the Sanctuary consists of 800 acres of wildlife habitat. Enjoy



yourself among restored prairies, created wetlands and planted deciduous and coniferous woodlots. The restored prairies have replaced weeds on retired farm fields to provide nesting sites for waterfowl and grassland birds. Running along the property is one of the last beaches of the ancient Glacial Lake Agassiz.

You will see many different types of wildlife in the various habitats. Moose and deer are a common sight. Long-eared owls, wood ducks, sandhill cranes and black-billed magpies are just a few of the nesting birds on site. Also, found in the ponds are chorus frogs, tiger salamanders and painted turtles.

Trails

Enjoy hiking, biking, and skiing on over 6 miles of trail. The "Landscaping for Wildlife" self-guided trail teaches you how to attract a mix of wildlife to your backyard. You can see nesting bluebirds, tree swallows and house wrens in the birdhouses along the "Bluebird Trail."

